

HiLIS – Integrated, Modular Warehouse Management System





Our HiLIS WMS is the core of the automatic or manual intralogistics process control system in the solutions we develop for customers, in our role as full service provider of custom intralogistics solutions. It's a high-performance software suite capable of mapping any process important to your intralogistics flows. As the central brain of the warehouse, HiLIS manages, controls and optimizes both material and data flows.

HiLIS clearly displays all data on the user interface of your choice – whether it be a classic PC workstation or a mobile device. Our warehouse management system can even optimize, control and monitor complex customer-specific logistics processes. Moreover, its modular structure allows for custom adaptations to your specific needs, offering maximum flexibility and investment security.

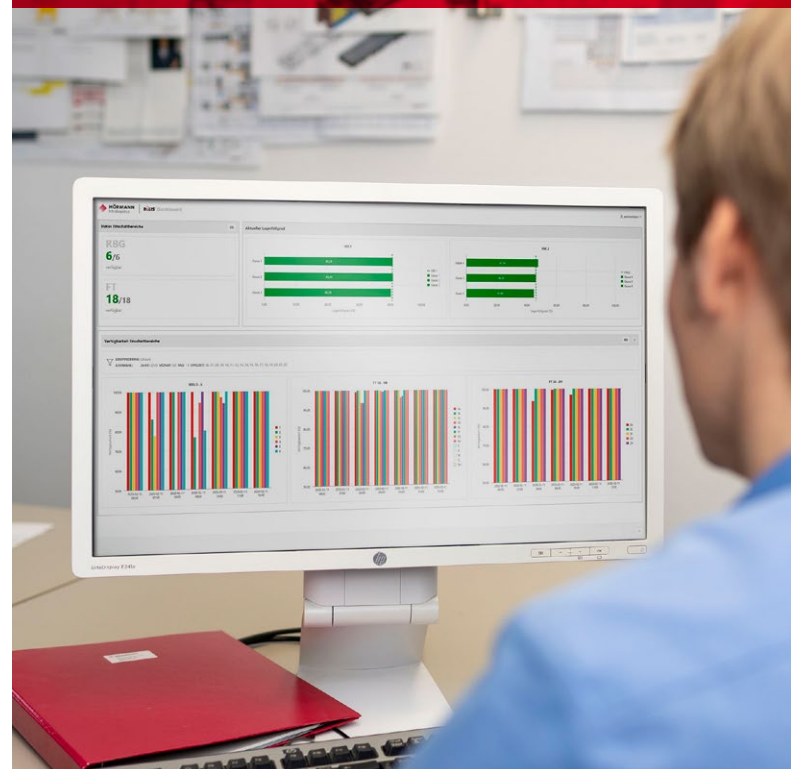
HiLIS offers numerous advantages:

- ◆ Flexible connection to any ERP and production system
- ◆ All WMS functions
- ◆ Adapted solutions for AutoStore® Systems: HiLIS AS
- ◆ Display on mobile devices
- ◆ Clear and ergonomic dashboard
- ◆ Material flow management and control
- ◆ PLC systems integration
- ◆ Visualization
- ◆ Maximum system availability and flexibility
- ◆ Transparency and security
- ◆ Scalability and future proofing
- ◆ Energy Optimization

“With HiLIS, we offer our customers a flexible, proven and future-proof warehouse management system for customized mapping and optimization of individual intralogistics processes.”



PETER GIERLICH | SALES HiLIS WMS
HÖRMANN INTRALOGISTICS



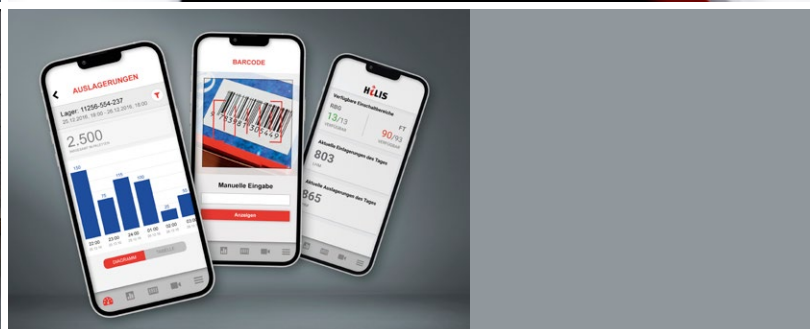
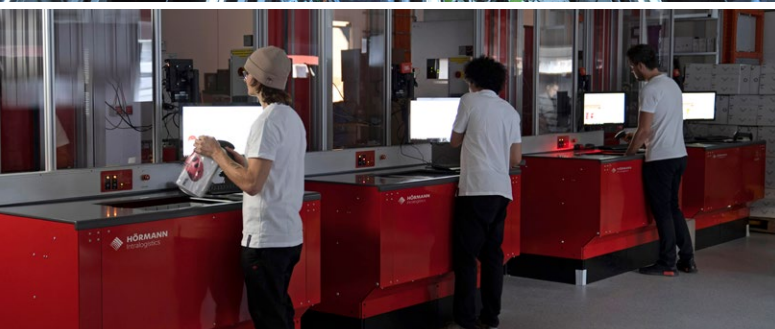
HiLIS AS – the Perfect Warehouse Management Solution for AutoStore® Systems

The AutoStore controller carries out the transport orders for all robots independently, but has no information on the contents of the bins. HÖRMANN Intralogistics developed the HiLIS AS superior warehouse management system specifically for this purpose. It is tailored to AutoStore requirements and connected directly to the customer's HOST systems.

HiLIS AS makes the incoming goods and order picking information available at the ports, maps all operator functionalities and enables operator intervention. HiLIS AS is easy to configure in the AutoStore test environment, for operational testing and training purposes.

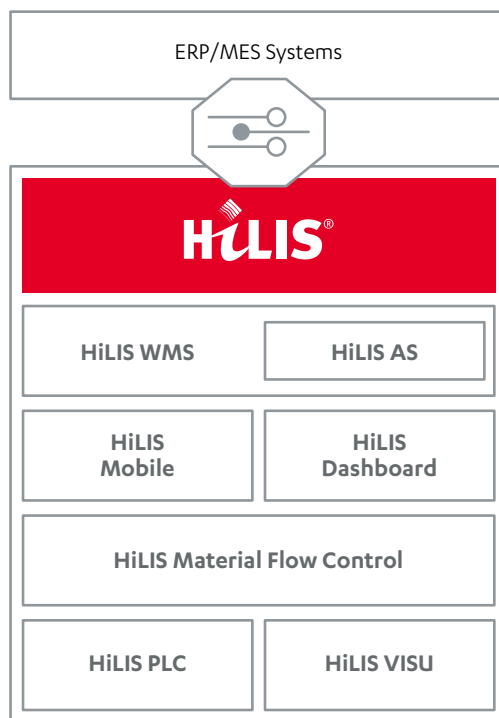
Mobile Web-Based GUI Applications

For maximum efficiency and transparency, all interfaces are designed in simple, user-friendly format. The HiLIS software effectively optimizes clarity, ergonomics and intuitive operation. This enables central mapping and access to all functional areas, which in turn enables rapid fault troubleshooting and remedy. The user interfaces can be displayed both on stationary and mobile devices.



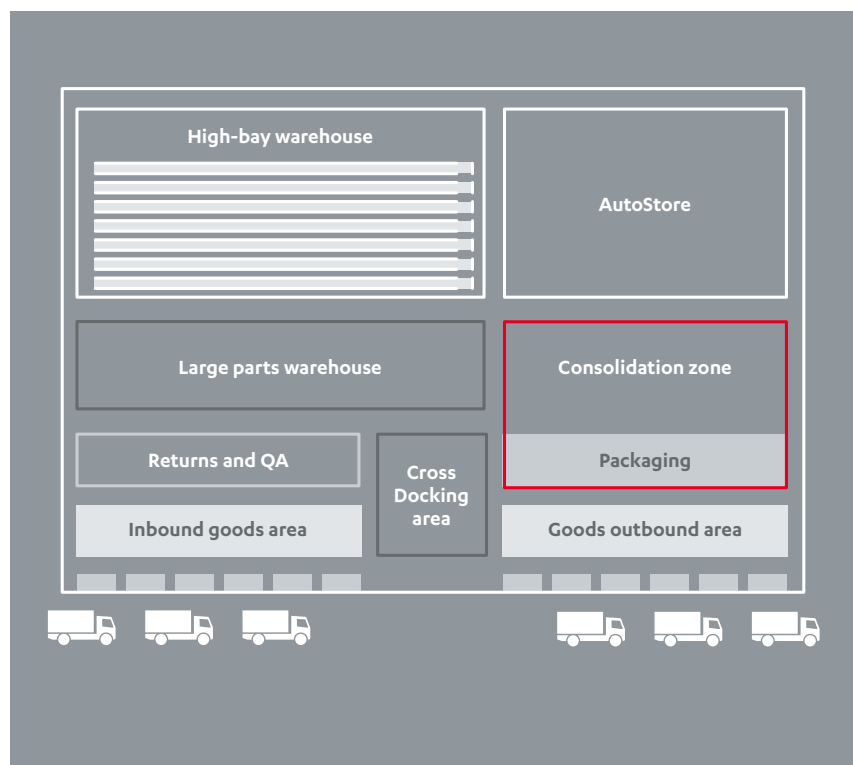
High Performance, Modular Design

HiLIS means high-performance, flexible warehouse management. It maps all intralogistics sub-areas, from incoming to goods outbound in an optimally coordinated overall system without media and interface interruptions.



HiLIS Functions

- ◆ Warehouse and stock control
- ◆ Control station monitoring
- ◆ Goods receipt and storage
- ◆ Order control
- ◆ Replenishment and production supply processes
- ◆ Order picking
- ◆ Consolidation and packaging
- ◆ Shipping control
- ◆ Stocktaking
- ◆ Metrics and Reporting
- ◆ Material flow control



HiLIS – State-of-the-Art Energy Management Technology

Optimizing energy consumption is an absolute must for intralogistics solutions, not only to reduce CO₂ emissions from power generation but operating costs as well.

When building or upgrading a high-bay warehouse, our intelligent HiLIS Eco power management system effectively reduces stacker crane energy consumption by around 25%.

Applying innovative Powercap technology for stacker cranes can reduce power consumption by around 40% and connected load by around 65%.

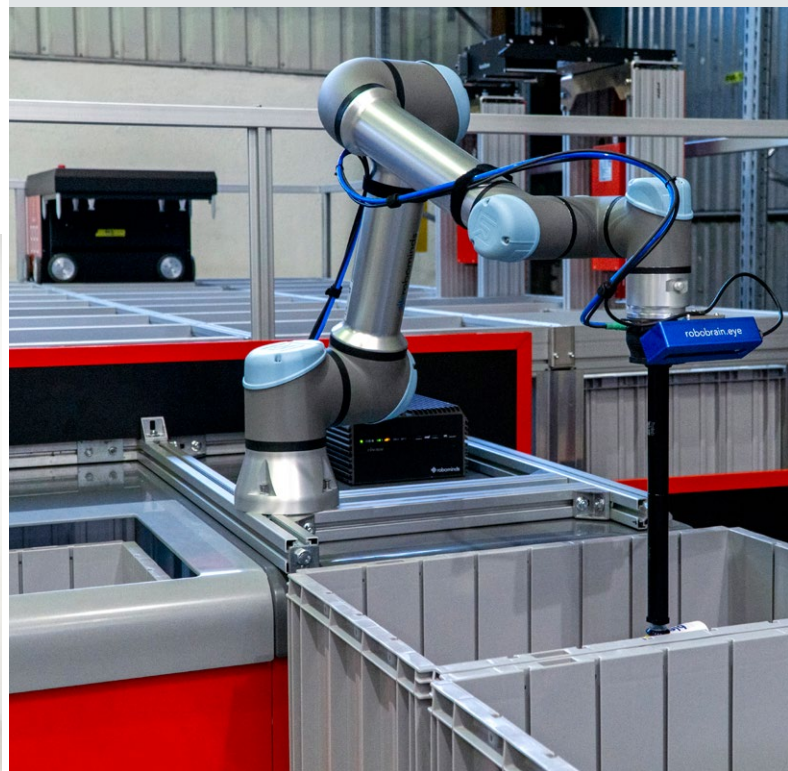
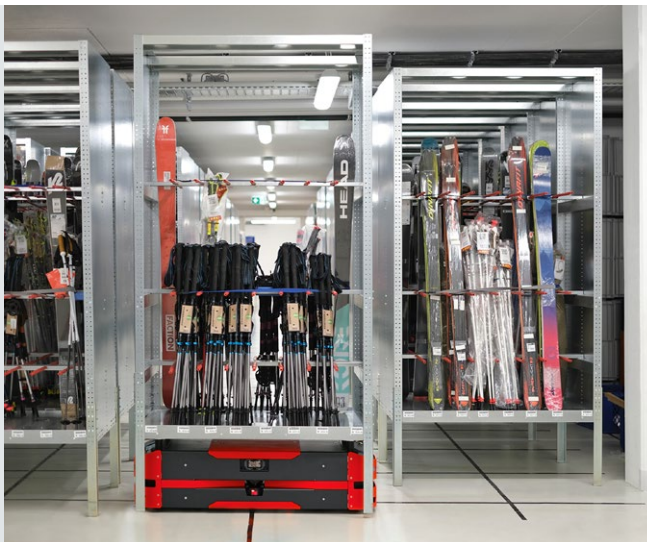
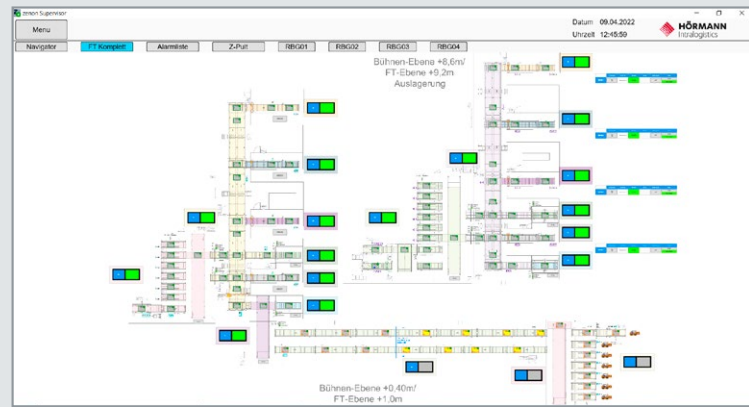
- ◆ Optimal use of power generated between axes
- ◆ Reduced energy demand through optimized weight management
- ◆ Storage of generated energy directly on the SRM
- ◆ Power consumption reductions up to 40 %
- ◆ Reduced CO₂ emissions



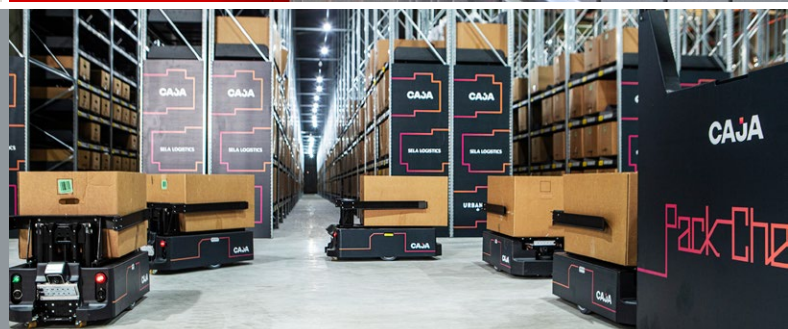
Smart Order Picking Solutions

Our HiLIS WMS integrates manual order picking processes, automated solutions and robotic applications.

- ◆ Goods-to-person
- ◆ Moving Racks
- ◆ Transport and lifting robotics
- ◆ Person-to-goods
- ◆ Pick by Robot
- ◆ Serial/parallel order picking
- ◆ Multi-level order picking
- ◆ Multi-Order Picking
- ◆ Batch Picking
- ◆ Negative order picking
- ◆ Supported (mobile) picking technologies:
Pick-by-Voice, Pick-by-Vision, Pick-by-Light
- ◆ Put-to-Light
- ◆ MDE, Tablets, Stapler terminals...



Our partners:



Customer Service

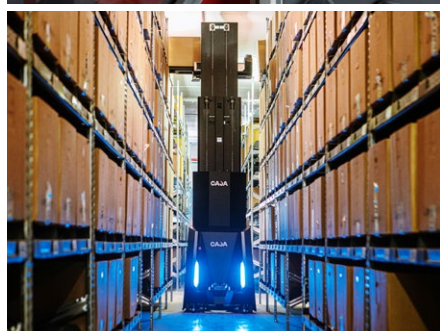
Our HÖRMANN Intralogistics service team is there for you 24 hours a day, 365 days a year with specialist know-how and dedication to give you maximum system availability through scheduled maintenance, as well as a system updating service.

If a fault occurs, our hotline service provides immediate assistance and, if necessary, sends out a team of specialists immediately. Every hotline message is immediately recorded in our fault database and can be viewed on-line at any time.

With the help of your feedback and statistical analysis, we can develop efficient preventive maintenance schedules tailored to your needs.

The advantages:

- ◆ Maximum system availability
- ◆ On-line access to fault database
- ◆ Optimized overall costs
- ◆ Lifetime contact



“The competent HÖRMANN intralogistics hotline staff have always provided us with quick, solution-oriented support in every case.”



There for You!



www.hoermann-intralogistics.com

HÖRMANN Intralogistics

Gneisenastrasse 15 | 80992 Munich
Germany

T +49 89 149898-0

info@hoermann-logistik.de