



**VAN DEN BOS**  
corrugated machinery



# TURNKEY CORRUGATED CARDBOARD PLANTS

## ONE-STOP-SHOP LOGISTICS & PRODUCTION MATERIAL FLOW



# INTRO

HÖRMANN Intralogistics & Van den Bos Corrugated Machinery are able to offer a complete package for corrugating plants:

1. **High-bay Warehouse** half and finish goods
2. Complete **conveyor** system
3. **One software** brain for all: HiLIS WCS & WMS – no more API headaches

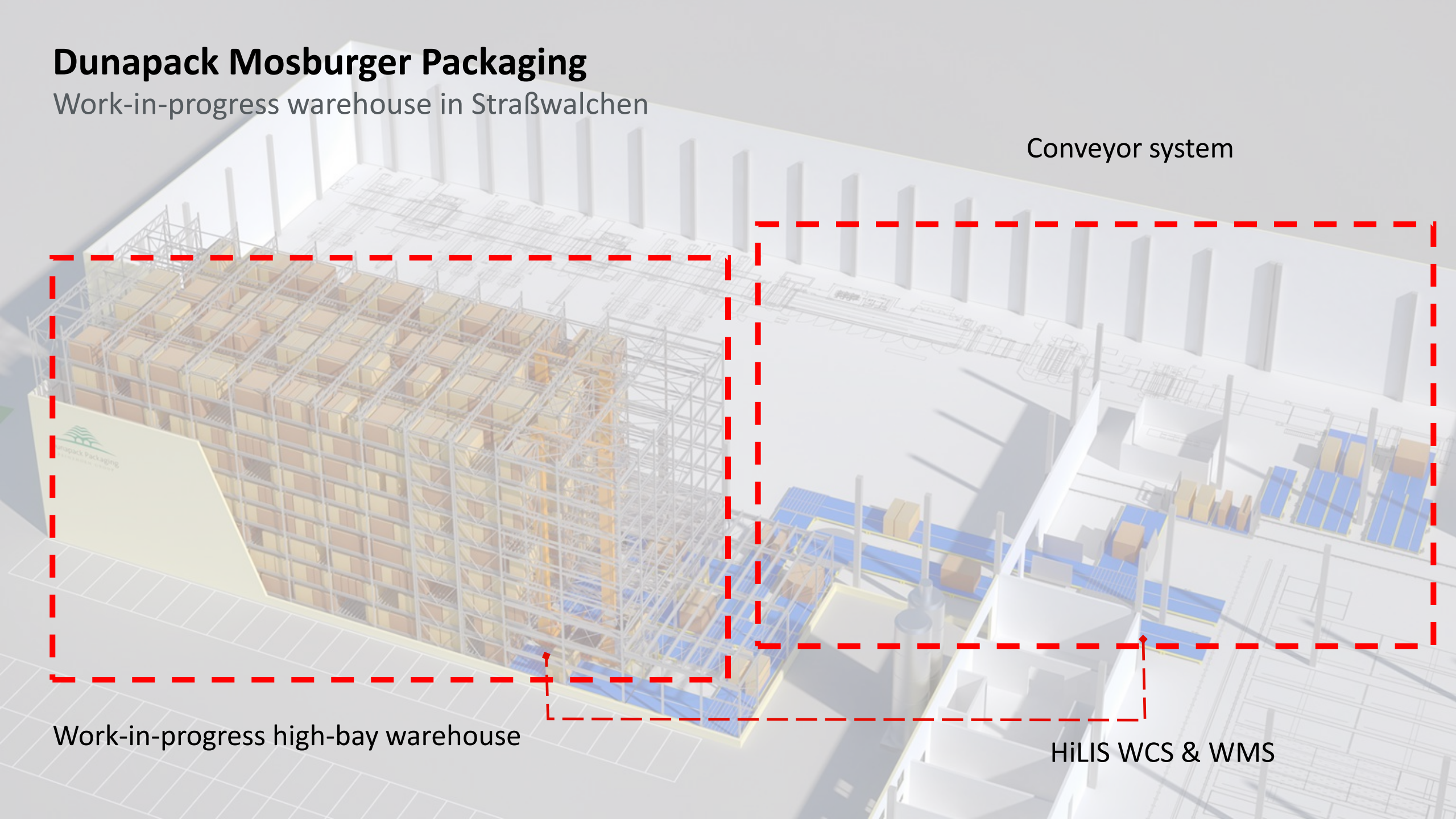
# Dunapack Mosburger Packaging

Work-in-progress warehouse in Straßwalchen

Conveyor system

Work-in-progress high-bay warehouse

HiLiS WCS & WMS





# HÖRMANN Intralogistics

## High-bay Warehouse

### Our USPs:

- ◆ **One-stop-shop** for conception, implementation, training and lifetime services
- ◆ **Decades of experience** in planning and implementing turnkey intralogistics solutions
- ◆ Modular **warehouse management** system HiLIS for efficient overall control
- ◆ Comprehensive **lifetime services** as well as modernization and retrofit approaches



# Van den Bos CM

Conveyor systems or the corrugated industry.

## Our USPs:

- ◆ **Complete projects** Corrugator outfeed, Work in progress (WIP) end of converting/ packing line
- ◆ **Brown field projects** Reuse existing conveyors and integrate in the new software
- ◆ Conveyor software system HiLIS for efficient overall control for **High-bay Warehouse and conveyor system**





# Warehouse Management System HiLIS

HiLIS WMS

Our high-performing WMS HiLIS maps all your intralogistics processes, from simple warehouse management to controlling the most complex warehouse processes and material flows.



- ◆ Fully vertically integrated WMS, from the ERP interface to the PLC level.
- ◆ Fully integrated material flow control
- ◆ Intuitive, easy-to-adapt onboarding for new employees.
- ◆ State-of-the-art software architecture and fully browser-based user interfaces.



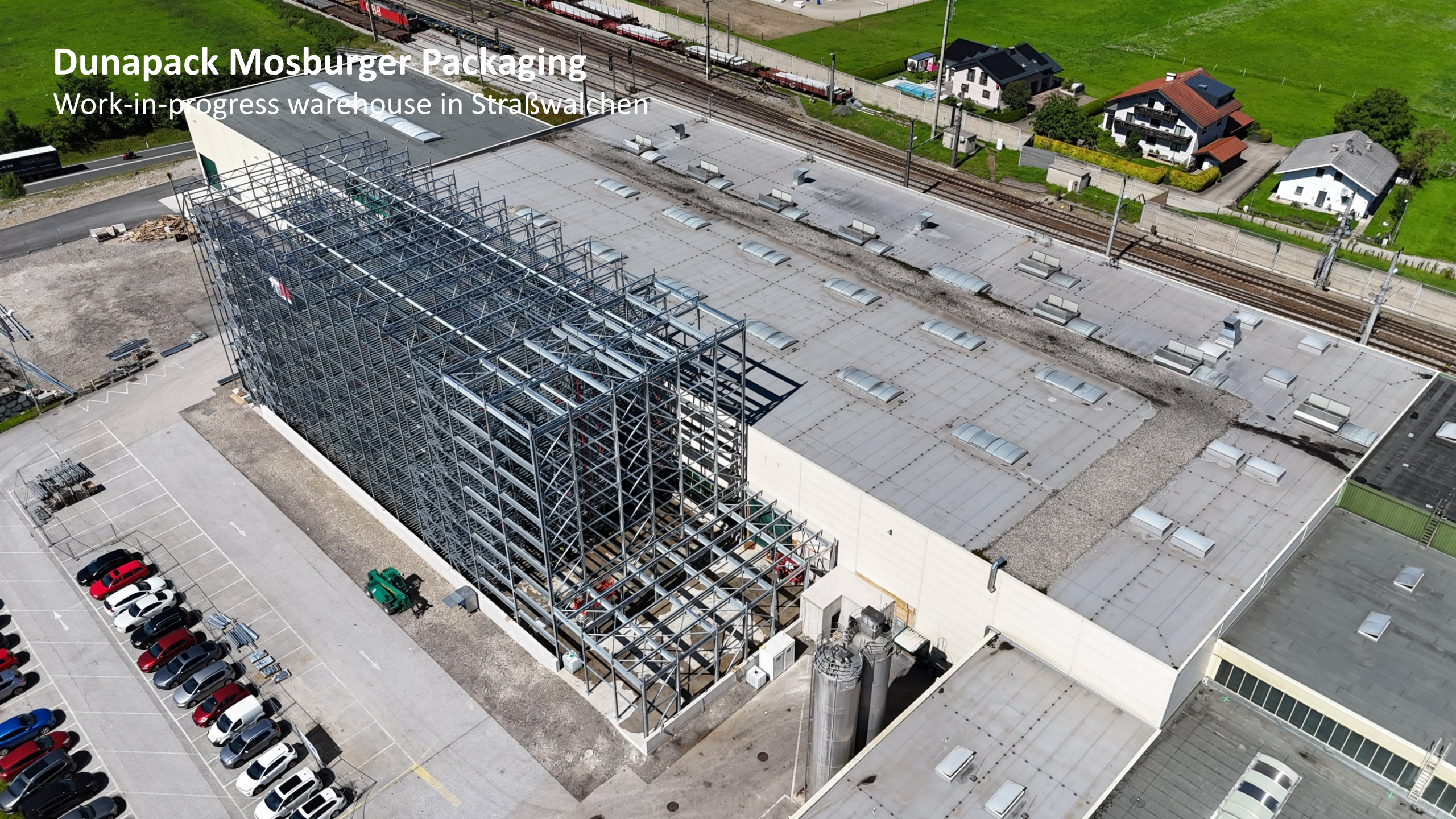
# > **THE CONCEPT EXPLAINED & REFERENCES**

PROVEN CONCEPTS FOR ALL-IN-ONE SOLUTIONS



# Dunapack Mosburger Packaging

Work-in-progress warehouse in Straßwalchen



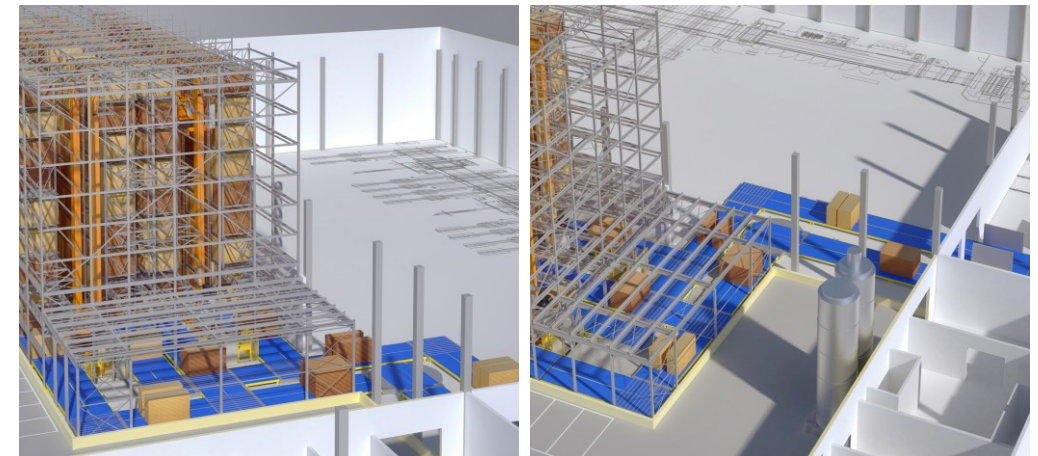
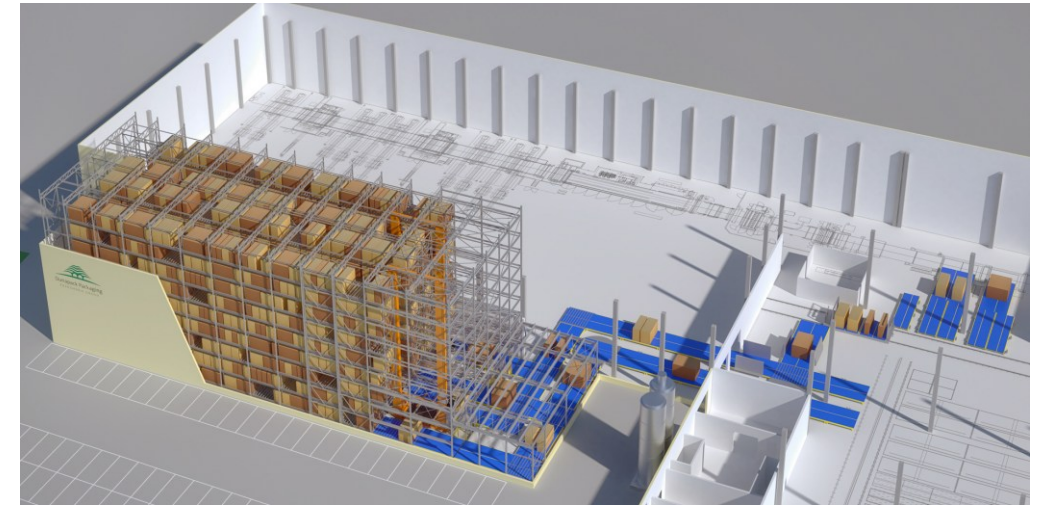


# Dunapack Straßwalchen

Work-in-progress warehouse for corrugated board with connecting conveyor technology

## Scope of delivery

- ◆ High-bay warehouse in silo design
- ◆ Two-legged / 2 x two-mast stacker cranes
- ◆ 40 LU/h incoming goods, 65 LU/h outgoing goods
- ◆ Conveyor technology for corrugated board formats: storage and retrieval stitches and transfer conveyors
- ◆ HiLIS WCS for warehouse management & stacker crane control technology and system visualization





# Palm Wellpappe Alzenau

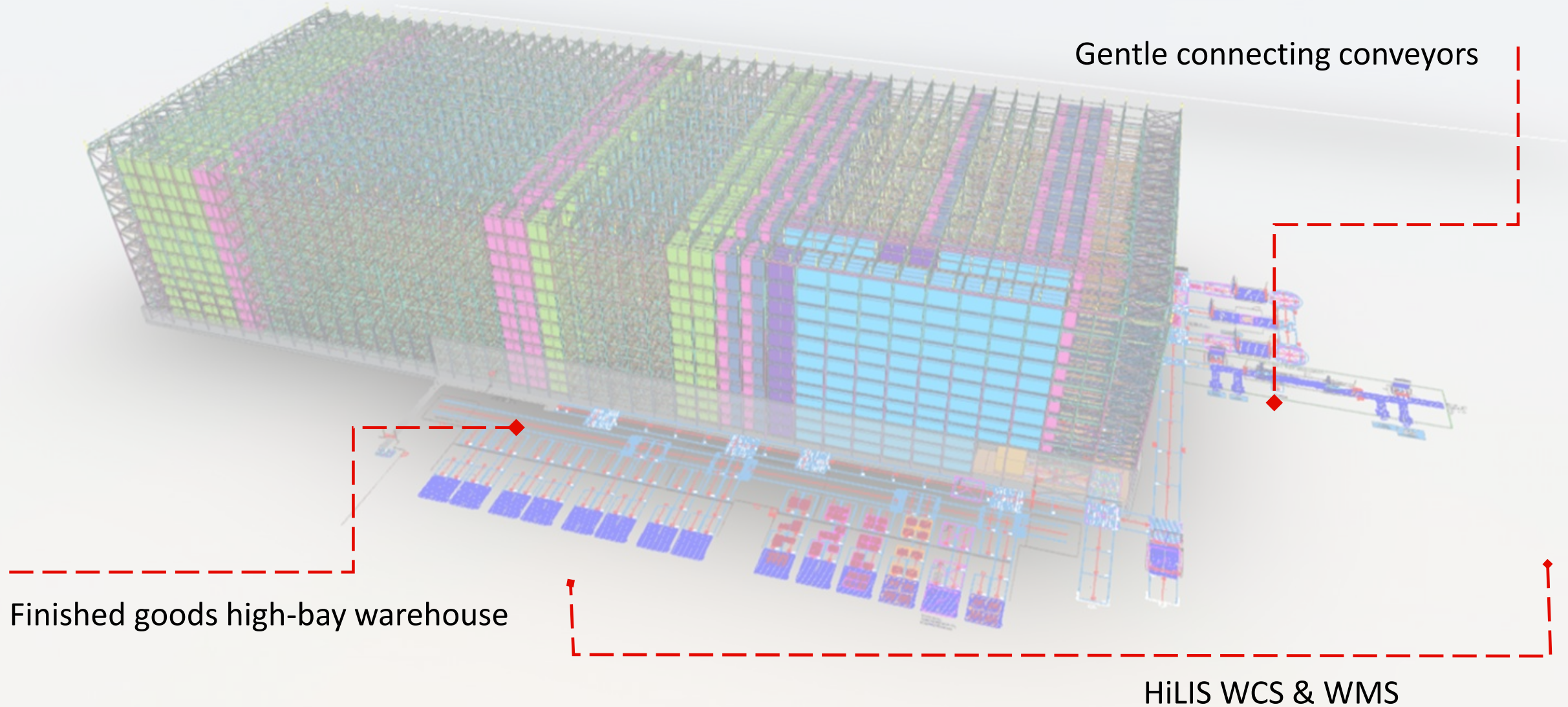
Finished goods and work-in-progress warehouse with connecting conveyor technology





# Palm Wellpappe Alzenau

Finished goods and work-in-progress warehouse with connecting conveyor technology





# Palm Wellpappe Alzenau

Finished goods and work-in-progress warehouse with connecting conveyor technology

 Wellpappe Alzenau



## Scope of delivery of work-in-progress warehouse (WIP):

- ♦ 3-aisle, 2-deep high-bay warehouse in silo design
- ♦ 3 two-mast storage and retrieval machines with telescopic forks
- ♦ Storage capacity 2.0 million m<sup>2</sup> format sheets, 648 large compartments and 138 cantilever compartments
- ♦ Corrugated board formats without sub-pallet, max. dimensions L x W x H = 5.0 x 2.9 x 1.9 m
- ♦ Capacity: 54 storage and 54 retrieval / h



# MEET US AT BOOTH E21/22

## AT FEFCO TECHNICAL SEMINAR 2025

### IN ROME, 08.-10.10.2025

HÖRMANN Intralogistics Solutions GmbH  
Gneisenaustraße 15 80992 Munich,  
Germany

+49 89 1498 980  
[info@hoermann-intralogistics.com](mailto:info@hoermann-intralogistics.com)  
[www.hoermann-intralogistics.com](http://www.hoermann-intralogistics.com)

Bedrijvenpark Twente Noord  
897602 KS, Almelo  
Netherlands

+31 (0)546 - 47 34 41  
[info@vandenbos-cm.nl](mailto:info@vandenbos-cm.nl)  
[www.vandenbos-cm.nl/en](http://www.vandenbos-cm.nl/en)

Van den Bos CM

**VAN DEN BOS**  
corrugated machinery

**HÖRMANN**  
Intralogistics